



KUM® BRUSHES

MAKE UP ARTISTRY



the-state-of-art makeup artistry

KUM®, a German based manufacturer of cosmetic pencil sharpeners became a legend in the art of creating makeup tools as innovative as they feature the most cut-edge technology and high quality.

A century later, the legend lives on, strengthened by its global expansion, its state of the art new product launches and by its renowned excellence in services.

The legend is now embodied by the launch of the most luxurious handmade cosmetic brushes.

KUM® Brushes epitomize true luxury and glamour: genuine craftsmanship, outstanding quality with remarkable performance.

KUM® offers a full range of standard and custom tailored brushes that are either made by pure natural hair or by synthetic hair that mimics the structure, tips and even the scales of the correspondent natural hair. KUM® brushes are uniquely hand sculpted keeping the natural tips of each „hair fiber intact“; For superior application „tips are not cut“.

Besides cosmetic brushes, KUM® also offers an extended portfolio of dental, porcelain, glass, ceramic, artist and restoration brushes.



KUM® BRUSH FACE

Model 1

POWDER BRUSH

Specifications:

- * Size: 26
- * Shape: Round-Oval
- * Hair: Pure mountain goat hair with natural tips

Features and Benefits:

- * Full and dense for dusting loose or pressed powder on face or body. This brush is particularly good for blush application with soft fibers that form a full, round-oval shape.
- * The brushes are hand sculpted using pure mountain goat hair with natural tips.





KUM® BRUSH FACE

Model 2

FASHION BRUSH

Specifications:

- * Size: 26
- * Shape: Flat-Oval
- * Hair: Pure mountain goat hair with natural tips blended with artificial hair

Features and Benefits:

- * A large oval shaped brush used for lightweight application and blending of face powder or pigments. Used to create soft layers or add textures.
- * The brushes are hand sculpted using a soft blend of pure mountain goat hair with natural tips and high-quality synthetic fibres.





KUM® BRUSH FACE

Model 3

POWDER BRUSH

Specifications:

- * Size: 22
- * Shape: Flat-Oval
- * Hair: Pure mountain goat hair with natural tips

Features and Benefits:

- * All-purpose brush for blush or face powder. This brush is particularly good for blush application. The fibers are soft and form a full, round-oval shape.
- * The brushes are hand sculpted using pure mountain goat hair with natural tips.





KUM® BRUSH FACE

Model 4

POWDER BRUSH

Specifications:

- * Size: 26
- * Shape: Round-Oval
- * Hair: Pure mountain goat hair with natural tips
with artificial hair

Features and Benefits:

- * A round oval shaped brush with a flat top. It is ideal for smooth and easy application of foundations, powder, creams and emulsions.
- * The brushes are hand sculpted using a soft blend of pure mountain goat hair with natural tips and high-quality synthetic fibres.





KUM® BRUSH FACE

Model 5

FAN BRUSH

Specifications:

- * Size: 22
- * Shape: Flat
- * Hair: Pure mountain goat hair with natural tips blended with artificial hair

Features and Benefits:

- * A large fan brush that is ideal for making corrections, the removal of excess powder and applying fine layers of powder to face and body.
- * The brushes are hand sculpted using a soft blend of pure mountain goat hair with natural tips and high-quality synthetic fibres.





KUM® BRUSH FACE

Model 6

BLUSH BRUSH

Specifications:

- * Size: 22
- * Shape: Flat-Slanted
- * Hair: Pure mountain goat hair with natural tips

Features and Benefits:

- * A large angled blush brush for expert application of blush. The pure mountain goat hair with natural tips are firmly bundled to form a flat-angled contour.
- * The brushes are hand sculpted using pure mountain goat hair with natural tips.





KUM® BRUSH FACE

Model 7

BLUSH BRUSH

Specifications:

- * Size: 18
- * Shape: Flat-Oval
- * Hair: Pure mountain goat hair with natural tips

Features and Benefits:

- * A flat oval all-purpose brush for the application of blush or face powder. This brush is particularly good for the application of blush. The pure mountain goat hair with natural tips are firmly bundled to form a flat oval shape.
- * The brushes are hand sculpted using pure mountain goat hair with natural tips.





KUM® BRUSH FACE

Model 8

BLUSH BRUSH

Specifications:

- * Size: 18
- * Shape: Flat-Oval
- * Hair: Pure blue Siberian Squirrel hair

Features and Benefits:

- * A large flat oval all-purpose brush for the application of blush or face powder. This brush is particularly good for the application of blush. The extremely soft pure siberian squirrel hair are firmly bundled to form a flat oval shape.
- * The brushes are hand sculpted using pure siberian squirrel hair with natural tips.





Model 9

- * Size: 17
- * Shape: Flat-Oval
- * Hair: Artificial grey hair with super-fine tips

- * A flat oval foundation brush, which has been designed to create a smooth and even finish. Used to apply, blend and distribute foundations to all areas of the face.
- * The brushes are hand sculpted using high quality synthetic fibres.





KUM® BRUSH FACE

Model 10

BLUSH BRUSH

Specifications:

- * Size: 17
- * Shape: Round-Oval
- * Hair: Pure mountain goat hair with natural tips blended with artificial hair

Features and Benefits:

- * A round-oval blush brush with a flat top that has been specifically designed for an extremely precise and even application of blush.
- * These brushes are hand sculpted using a special blend of pure mountain goat hair with natural tips and high-quality synthetic fibres.





KUM® BRUSH FACE

Model 11

BLUSH BRUSH

Specifications:

- * Size: 18
- * Shape: Flat-Slanted
- * Hair: Pure mountain goat hair with natural tips

Features and Benefits:

- * An angled blush brush for expert application of blush.
The pure mountain goat hair with natural tips are firmly bundled to form a flat-angled contour.
- * The brushes are hand sculpted using pure mountain goat hair with natural tips





KUM® BRUSH FACE

Model 20-K

FAN BRUSH

Specifications:

- * Size: 8
- * Hair: Artificial grey hair with super-fine tips

Features and Benefits:

- * This fan brush softly and seamlessly applies powder foundations, soft lights, bronze lights and blush. Use it even to apply the darkest shades for a perfect natural finish. It is a must-have tool for lifting away any shadow that may have fallen, removing excess powder and making any corrections without disturbing make-up.
- * The brushes are hand sculpted using high-quality synthetic fibres





KUM® BRUSH FACE

Model 21-K

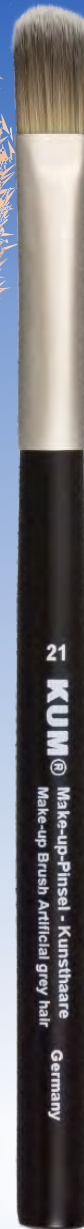
Make-Up Brush

Specifications:

- * Size: 12
- * Shape: Flat-Oval
- * Hair: Artificial grey hair with super-fine tips

Features and Benefits:

- * A small flat oval foundation brush, which has been designed to create a smooth and even finish. Used to apply, blend and distribute foundations to all areas of the face.
- * The brushes are hand sculpted using high quality synthetic fibres.





KUM® BRUSH EYES

Model 22-K

BLENDER BRUSH

Specifications:

- * Size: 12
- * Shape: Flat-Slanted
- * Hair: Pure Casan-Squirrel hair

Features and Benefits:

- * For applying and blending eye shadow. The soft, smooth pure casan-squirrel hair are in a full, angled design.
- * The brushes are hand sculpted using pure casan-squirrel hair.





KUM® BRUSH EYES

Model 23-K

BLENDER Brush

Specifications:

- * Size: 10
- * Shape: Flat-Slanted
- * Hair: Pure Casan-Squirrel hair

Features and Benefits:

- * For applying and blending eye shadow. The soft, smooth pure casan-squirrel hair are in a full, angled design.
- * The brushes are hand sculpted using pure casan-squirrel hair.





KUM® BRUSH EYES

Model 24-K

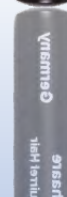
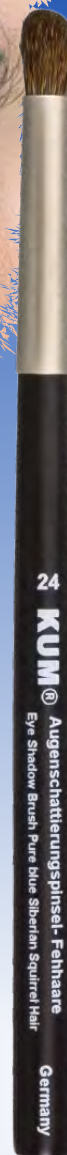
EYE SHADOW BRUSH

Specifications:

- * Size: 8
- * Shape: Round-Oval
- * Hair: Pure Blue Siberian Squirrel hair

Features and Benefits:

- * For application of eye shadow to the eyelids. This brush has a thick bundle of pure siberian squirrel hair arranged in a round-oval shape.
- * The brushes are hand sculpted using pure blue siberian-squirrel hair.





KUM® BRUSH EYES

Model 25-K

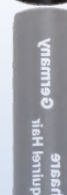
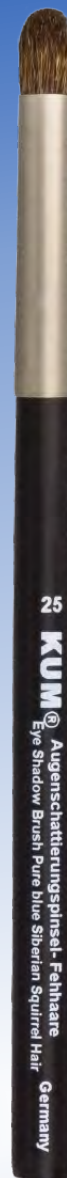
EYE SHADOW BRUSH

Specifications:

- * Size: 10
- * Shape: Round-Oval
- * Hair: Pure Blue Siberian Squirrel hair

Features and Benefits:

- * For application of eye shadow to the eyelids. This brush has a thick bundle of pure siberian squirrel hair arranged in a round-oval shape.
- * The brushes are hand sculpted using pure blue siberian-squirrel hair.





KUM® BRUSH EYES

Model 26-K

EYE SHADOW BRUSH

Specifications:

- * Size: 10
- * Shape: Round-Oval
- * Hair: Pure Blue Siberian Squirrel hair

Features and Benefits:

- * For application of eye shadow to the eyelids. This brush has a thick bundle of pure siberian squirrel hair arranged in a round-oval shape.
- * The brushes are hand sculpted using pure blue siberian-squirrel hair.



26
KUM® Augenschattierungspinsel - Fehhaare
Eye Shadow Brush Pure blue Siberian Squirrel Hair
Germany





KUM® BRUSH EYES

Model 27-K

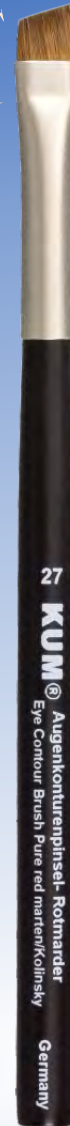
EYE CONTOUR BRUSH

Specifications:

- * Size: 10
- * Shape: Flat-Slanted
- * Hair: Pure Red Marten Kolinsky

Features and Benefits:

- * A brush designed for defining the eye with colour. Firmly bristled, it applies colour in a stroke for instant definition. The pure red marten/kolinsky hair are formed to a perfect angle for extra precision.
- * The brushes are hand sculpted using pure red marten/kolinsky hair.





KUM® BRUSH EYES

Model 28-K



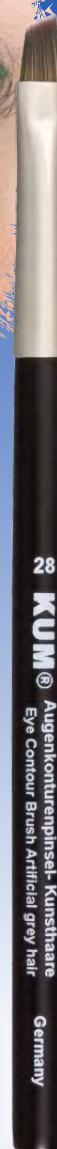
EYE CONTOUR BRUSH

Specifications:

- * Size: 8
- * Shape: Flat-Slanted
- * Hair: Artificial grey hair with super-fine tips

Features and Benefits:

- * A brush designed for defining/adding "fill" to brows or precisely defining the eye with colour. Extremely precise angled tip made out of high-quality synthetic fibre can be used with liquid, powder or cream products.
- * The brushes are hand sculpted using high-quality synthetic fibres.



28 KUM®



KUM® BRUSH EYES

Model 29-K

CONCEALING BRUSH

Specifications:

- * Size: 6
- * Shape: Flat-Blunt
- * Hair: Artificial grey hair with super-fine tips

Features and Benefits:

- * A flexible high-quality synthetic fibre brush formed to a flat tip for precise application and blending of all concealer formulas and other emollient products.
- * The brushes are hand sculpted using high-quality synthetic fibres.





KUM® BRUSH EYES

Model 30-K

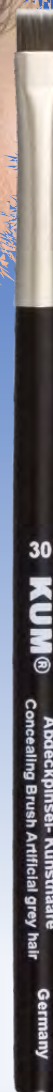
CONCEALING BRUSH

Specifications:

- * Size: 6
- * Shape: Flat-Blunt
- * Hair: Artificial grey hair with super-fine tips

Features and Benefits:

- * A flexible high-quality synthetic fibre brush formed to a flat tip for precise application and blending of all concealer formulas and other emollient products.
- * The brushes are hand sculpted using high-quality synthetic fibres.





KUM® BRUSH EYES

Model 31-K

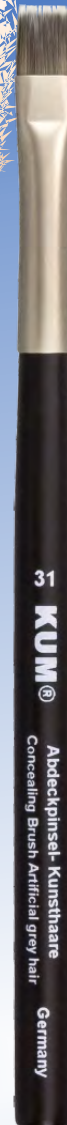
CONCEALING BRUSH

Specifications:

- * Size: 10
- * Shape: Flat-Blunt
- * Hair: Artificial grey hair with super-fine tips

Features and Benefits:

- * A flexible high-quality synthetic fibre brush formed to a flat tip for precise application and blending of all concealer formulas and other emollient products.
- * The brushes are hand sculpted using high-quality synthetic fibres.





KUM® BRUSH EYES

Model 32-K

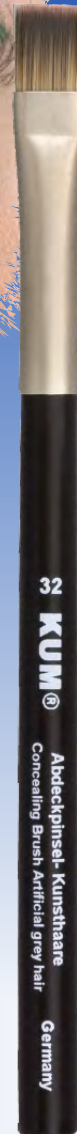
CONCEALING BRUSH

Specifications:

- * Size: 12
- * Shape: Flat-Blunt
- * Hair: Artificial grey hair with super-fine tips

Features and Benefits:

- * A flexible high-quality synthetic fibre brush formed to a flat tip for precise application and blending of all concealer formulas and other emollient products.
- * The brushes are hand sculpted using high-quality synthetic fibres.





KUM® BRUSH EYES

Model 33-K

EYESHADOW BRUSH

Specifications:

- * Size: 8
- * Shape: Flat-Oval
- * Hair: Special blend of extremely fine natural hair

Features and Benefits:

- * For application of eye shadow to the lid area. The special blend of extremely fine hair is arranged to a flat oval shape.
- * The brushes are hand sculpted using a special blend of extremely fine natural hair.





KUM® BRUSH EYES

Model 34-K

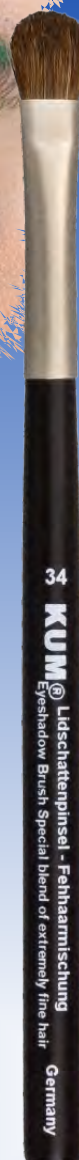
EYESHADOW BRUSH

Specifications:

- * Size: 10
- * Shape: Flat-Oval
- * Hair: Special blend of extremely fine natural hair

Features and Benefits:

- * For application of eye shadow to the lid area. The special blend of extremely fine hair is arranged to a flat oval shape. The softness of this blend also makes this brush ideal for the blending eye shadow.
- * The brushes are hand sculpted using a special blend of extremely fine natural hair.





KUM® BRUSH EYES

Model 35-K

EYESHADOW BRUSH

Specifications:

- * Size: 6
- * Shape: Flat-Oval
- * Hair: Pure Red Marten Kolinsky

Features and Benefits:

- * For application of eye shadow to the lid area. The pure red marten hair are arranged to a flat oval shape. The firm but soft character of these hair allows precise working.
- * The brushes are hand sculpted using pure red marten/ kolinsky hair.



Germany



KUM® BRUSH EYES

Model 36-K

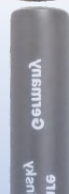
EYESHADOW BRUSH

Specifications:

- * Size: 10
- * Shape: Flat-Oval
- * Hair: Pure Red Marten Kolinsky

Features and Benefits:

- * For application of eye shadow to the lid area. The pure red marten hair are arranged to a flat oval shape. The firm but soft character of these hair allows precise working.
- * The brushes are hand sculpted using pure red marten/ kolinsky hair.





KUM® BRUSH

Model 37-K

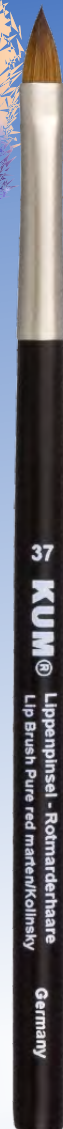
LIP BRUSH

Specifications:

- * Size: 6
- * Shape: Cat Tongue Shaped
- * Hair: Pure Red Marten Kolinsky

Features and Benefits:

- * For the controlled and precise application of lipstick. The firm but soft pure red marten/kolinsky hair are arranged to a tapered tip.
- * The brushes are hand sculpted using pure red marten/kolinsky hair.





KUM® BRUSH LIPS

Model 38-K

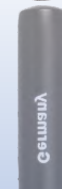
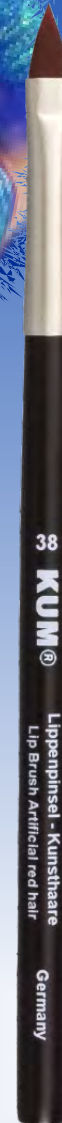
LIP BRUSH

Specifications:

- * Size: 6
- * Shape: Cat Tongue Shaped
- * Hair: Highly Elastic Artificial Hair

Features and Benefits:

- * The extremely elastic high quality synthetic hair are just the right mix of firm and soft for controlled and precise application of lipstick. The hair are arranged to a tapered tip.
- * The brushes are hand sculpted using only high-quality synthetic fibres.





KUM® BRUSH EYES

Model 39-K

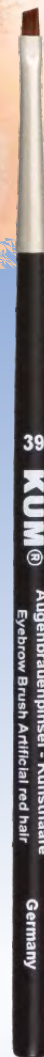
EYEBROW BRUSH

Specifications:

- * Size: 2
- * Shape: Flat-Slanted
- * Hair: Highly Elastic Artificial Hair

Features and Benefits:

- * Applies colour to the brow. Use to define or apply additional "fill". Highly elastic artificial hair are arranged to an extremely precise angled tip allowing application like a pro.
- * Used to apply powder, liquid or cream products.



KUM®



KUM® BRUSH EYES

Model 40-K

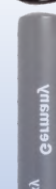
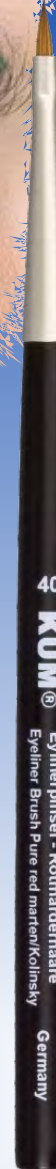
EYELINER BRUSH

Specifications:

- * Size: 4
- * Shape: Flat-Pointed
- * Hair: Pure Red Marten Kolinsky

Features and Benefits:

- * The extra fine tip on this brush delivers a precise, firm and even stroke with which to line the eyes. The pure red marten/kolinsky hair are arranged to a flat pointed tip. Used to apply liquid or cream products.
- * The brushes are hand sculpted using pure red marten/kolinsky hair.





KUM® BRUSH EYES

Model 41-K

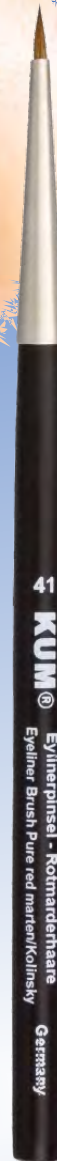
EYELINER BRUSH

Specifications:

- * Size: 4
- * Shape: Round-Pointed
- * Hair: Pure Red Marten Kolinsky

Features and Benefits:

- * The extra fine tip on this brush delivers a precise, firm and even stroke with which to line the eyes. The pure red marten/kolinsky hair are arranged to a round pointed tip. Used to apply liquid or cream products.
- * The brushes are hand sculpted using pure red marten/kolinsky hair.





KUM® BRUSH EYES

Model 42-K

MASCARA BRUSH

Specifications:

* Hair: Soft Hair

Features and Benefits:

* Used to groom and separate lashes. This brush allows you to reach even the finest lashes. It is also perfect for applying mascara and bringing eyebrows into shape.



ymem190



KUM® BRUSH

Model 43-K

MASCARA BRUSH

Specifications:

* Hair: Firm Hair

Features and Benefits:

* Used to groom and separate lashes. This brush allows you to reach even the finest lashes. It is also perfect for applying mascara and bringing eyebrows into shape.





KUM® BRUSH EYES

Model 44-K

BROW COMB WITH BRUSH LARGE

Specifications:

- * Hair: Natural bistles

Features and Benefits:

- * Used for grooming and styling of brows for a natural looking finish.





KUM® BRUSH

Model 45-K

BROW COMB WITH BRUSH SMALL

Specifications:

- * Hair: Artificial bristles

Features and Benefits:

- * Used for grooming and styling of brows for a natural looking finish.





KUM® BRUSH EYES

Model 46-K

EYESHADOW APPLICATOR

Specifications:

- * Hair: exchangeable black latex applicator

Features and Benefits:

- * Used for an even and smooth application of eye shadow.
The small size allows precise work even in those hard to reach areas.
- * The adapter allows an easy replacement of the smudger.





KUM® BRUSH EYES

Model 47-K

EYESHADOW APPLICATOR

Specifications:

- * Hair: large black latex applicator

Features and Benefits:

- * Used for an even and smooth application of eye shadow.
The large size makes large surface application easy and quick.



ym1919

There are basically no limits in creating the brush to fit exactly your needs. Please share with us your ideas. Of course, when you choose from the below broad spectrum of standard components we can produce your customized brush starting at a minimum quantity of 100 pcs.

Please inform us of:

- Model #
- Hair Color
- Ferrule Color
- Handle Shape
- Handle Color

You can choose from the following stamp colors for your logo: silver, white, red, black, blue, gold, metallic red

Hair Color 01



02



03



04



05



06



07



08



09



Ferrule Color



Handle Shape



Handle Color



Contacts:



Kristin Biermann

Essenbacher Straße 2, D-91054 Erlangen / Germany
Phone: + 49 (0)9131/8268-65 Fax: + 49 (0)9131/8268-94
kristin.biermann@kum.net



Margaret Curran

IDA Industrial Estate , Athboy Road, Trim, Co.Meath Ireland
Phone: + 353 46 9481600 Fax: + 353 46 94816001
margaret.curran@kum.ie



Otto W. Thellmann

48 Timberhill Drive, Franklin Park , NJ 08823 USA
Phone: + 1732-398-1468 Fax: + 1732-398-1704
otto.thellmann@kum-ny.com



Patricia Vahé-Goddard

pH Beauté, 45 boulevard Victor Hugo, 92110 Clichy, France
tel (fixe) + 33 (0)141409300, tel (mobile) + 33 (0)676758945
pvahegoddard@phbeaute.com



日本支部代表

倉石 功男

大阪市中央区安土町 1 - 5 - 8
本町Fビル 6F
電話 06 - 6268 - 0559
ファックス 06 - 6268 - 0560